



Great Basin National Park Foundation

2018 Annual Report

FOUNDER
Bonnie Bryan
(1939-2016)

Senator Harry Reid,
Honorary Director

Dave Tilford,
Board Emeritus

BOARD OF DIRECTORS

Mike Niggli
Chair
Steven Brown
Vice Chair
Robert Morrill
Secretary
Jeremy Reichenberg
Treasurer, Finance & Planning Chair
Briget Eastep
Education and Outreach Chair
John Kenney
GBO Operations Chair
Senator Richard Bryan
Rebecca Mills
Alicia Reban

ADVISORY BOARD

Caroline Bruno
Timothy Cashman
Mike Corum
Kenji Hakuta
JaNae Johnson
Marc Johnson
Jerry Martin
Cindy Ortega
Robert Palmer
Margaret Rees
James T. Reynolds

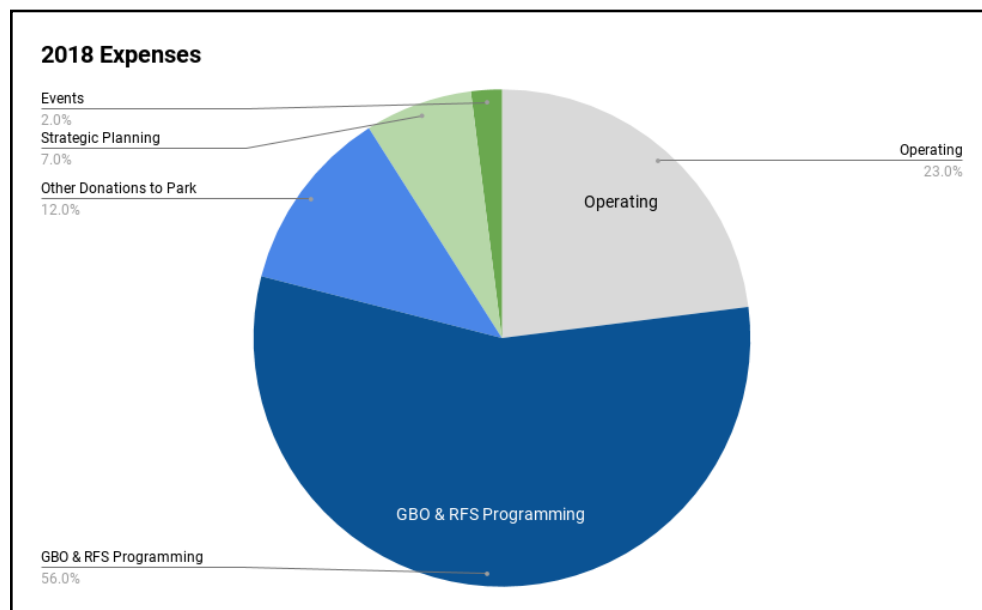
2018 marked the 20th anniversary of the Great Basin National Park Foundation (GBNPF). We kicked off the year honoring retired Senator Harry Reid, sponsor of the law establishing Great Basin National Park, and now Honorary Director of GBNPF. We also ensured our ability to support the Park for years to come by hiring a consultant to guide us in adopting a new strategic plan.

As you will read in the following pages, direct programming through the Great Basin Observatory (GBO) and *Reach for the Stars* (RFS) initiative comprised the majority of our spending in 2018, totaling \$58,524. Other donations to the Park totaled \$12,747, including Park improvements of a new Celestron telescope for astronomy programming, Park search and rescue equipment, a new Winchester Rifle visitor center exhibit, and Park Bioblitz and Astronomy Festival support.

We received \$50,685 in donations in 2018, 85% of which were Foundation grants. In addition we completed program work in 2018 funded through several multi-year grants.

GBNPF programs are administered by a group of dedicated volunteers (Board members, committee members, and scientists) and part-time project managers.

We hope you will continue to support Great Basin National Park through becoming a Friend of the Great Basin National Park Foundation, a 501c3 nonprofit.



Park Improvements

Thanks to a grant from the Fund for People in Parks, this intact 1873 Winchester Rifle found lying against a tree in the Great Basin National Park wilderness will have a new visitor center display. The exhibit, which will be installed in 2019, will showcase the rifle and interpret the time period's pioneer history. Be sure to check it out at the Baker Visitor Center.



Programming

The Great Basin Observatory (GBO) and *Reach for the Stars* (RFS) Education and Outreach initiative made big impacts in 2018. Using the GBO, students have been exploring the amazing dark skies above Great Basin NP, performing planetary imaging, speckle interferometry, astrometry, photometry, narrow band imaging, astrophotography, and spectroscopy. College students published three scientific research papers using GBO data. Over thirty scientists from GBNPF's four partner universities attended a two day student Starfest Symposium at the University of Nevada, Reno. Plus the GBO received a significant upgrade, a long-term loan of an eShel spectrograph from Concordia University.

Beautiful images of the cosmos continue to highlight the GBO's capabilities. On Sept. 5, a GBO image of the Hamburger Galaxy, a spiral galaxy 100,000 light years away, taken by Paul Gardner and processed by Rogelio Bernal Andreo, was NASA's Astronomy Picture of the Day.

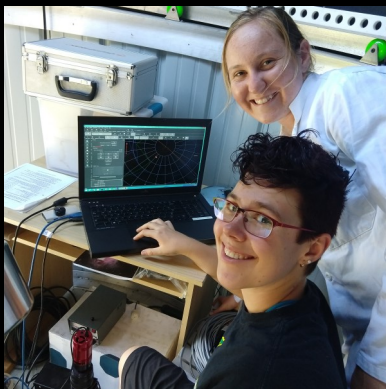




RFS classroom activity



RFS classroom presentation



Concordia students testing new GBO spectrograph



Milky way above the GBO at Great Basin NP

In 2018, RFS continued to expand Great Basin National Park’s ability to educate students, Park visitors and local communities about science and the importance of dark sky preservation. Elementary and middle school educators can now access over 20 activity based Next-Generation Science Standard and Utah Science Core Standard aligned lesson plans on the Great Basin Observatory web portal. Lessons have supporting videos, PowerPoints, editable Lab Sheets and interactive resources.

In 2018 RFS connected 235 elementary students and 54 local educators to the idea of dark sky preservation through 9 classroom presentations and 4 educator meetings. RFS also reached over 650 individuals at events in Great Basin National Park.

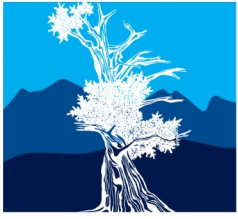
RFS educator resources, classroom presentations and student outreach have been largely supported in 2018 through generous grants from the Nevada Energy Foundation and the Robert S. and Dorothy J. Keyser Foundation.

In 2019 RFS goals include supporting two Great Basin NP astronomy interns (allowing an additional 1,200 Park visitors to attend Park astronomy programs), conducting classroom presentations in 90% of the elementary and middle schools within the 2 counties bordering Great Basin NP, creating “Star Boxes” for elementary and middle school teachers which contain all the materials needed to teach multiple science lessons in their classroom and holding the 2nd Starfest Student Symposium for GBO researchers, students and professors in Cedar City, Utah.

We are grateful to our 2019 RFS program supporters: The Cashman Family Foundation, Great Basin Heritage Area Partnership, George S. and Dolores Doré Eccles Foundation, The Jack Van Sickle Foundation, and Friends of Great Basin National Park.

Message from Great Basin NP Superintendent James Woolsey

The National Park Service is fortunate to have such an outstanding partner in the Great Basin National Park Foundation. *Reach for the Stars* and the Great Basin Observatory work within the astronomy theme at Great Basin NP, and allow us to push this effort into another dimension, by engaging university researchers and our visitors to peek deep into the universe and by doing direct programming with local schools, connecting youth to the Park and the concept of dark sky preservation. This park is lucky in that our energetic and capable friends group helps us multiply our impact and further our goals.



GREAT BASIN
NATIONAL PARK
— FOUNDATION —

Great Basin National Park Foundation

P. O. Box 181
Baker, Nevada 89311

www.greatbasinfoundation.org



Great Basin Observatory
www.greatbasinobservatory.org

Great Basin National Park Foundation
2018 Donors

Donations of \$20,000

Cashman Family Foundation
Fund for People in Parks/ Community
Initiatives
Great Basin Heritage Area Partnership

Donations of \$2,500-\$4,999

Bill and Holly Wilson
National Environment Educational Fund
The Nature Conservancy of Utah

Donations of \$1,000- \$2,499

Steve Brown
David Marquart
Michael and Linda Niggli
Jim and Jackie Kenney

Donations of \$500-\$999

Maria Denzler
Kenji Hakuta
Mason Family Trust
Steve Moore
Robert and Mia Morrill
Marc Johnson and Karen Penner
Mary Simmons
Dave and Edith Tilford

Donations of \$250-\$499

Briget Eastep
John Kenney
Alicia Reban and John Sherman
Jeremy Reichenberg

Donations of \$100-\$249

Katharine Butler
Bill Gardner
Rebecca Mills
David and Jo Charleston in honor of
Elinor Charleston

Donations up to \$49

Brent Jackson
Peter Kirk
Caroline McIntosh
James Woolsey
Wild Island

*Be a Friend of
your
National Park!*

Visit

www.greatbasinfoundation.org

www.greatbasinobservatory.org